

μāÇá Óyó ÓÑ# SéÑ# Óyú# #00

' » G p d Ž \* • +± €N g L< &/ !A Ö È ' N

½ Š " βw0 wM%É βw0 w?! "- β

%ž-D GT " 7Wš " K•"K,>->-¶ œ@!@+ 0ž,>- , A O'N g @@Í; A O' - \ /8 È O'Ñ "K,>->-¶ œ@!@o

...œ@Áμ & €N g U • Dž8 Z!A Ö i • C " %öMA Ö • > N, : o P KcA X 6 g L<3i TE È' T wý ' 3 - .úFôUGp d Ž \* • & €N g!A Ö i • E=y' N' ] @±±æ" w à 3 €N g L< &/ • Dž8+±A Ö È ' NK MÅ NÅu4 ' 3 ' » G p d Ž \* • N, 4 ±±± €N g!A Ö 2( • N, w N, 6\* L üE ( < &/ ' L< &/ +±A Ö È ò â &c; A 3óø3ú3 Gp , • d Ž \* • i • ] @fn /8 £ Ö ) 3 ±€™< - ; EÖÁ 3 ½> Ç 3 - 3öN, 4 ± w£EÖô) 4D™ Ä ] h € } 42( Z±± !A Ö i • GM!< N, 4 È=•; w æ" L-M± • ,% +±A Ö i • ± €N, 4 ± w\* L Ä ] ó- üE ( < &/ ' L< &/ • ä . 8±± €N g!A Ö È N,

œ@| œ@Á €N g G p d Ž \* • ' N L< &/ • GM!< i • ] @Í  
Z + 31" \$ ÁÆRÖžBœœœ' ([ 4 - . Áöœœœ' 0 4C\$ Á! !!KÖ' %! β o! OK ÖRŠK

œœ €N g 6\* L h Ö f !A Ö C • E/ Á : 9±±  
N=y(Ü ° CN=y( Í %3üDôA/£ " ; Í N g ±±<  
&/ • 6 V » ý P N g ±±Ä • Ö 6\* È %o - Ä Ö  
MÖ\* È o'6\* L ! 6 u ] 1 = ( Í >ñ? %%, x 8 "  
Å g5) €N g ±± • Fú! T " ! Í 6 V » ý P  
N g ±±g Ö T 1 | ± T " ý P N g ±±4) 5 T 6\* %  
' 6 >@K lμ & L< &/ • BB±±A Ö È 1 Ö È  
" ú Á! TE=y-A/£ %A 3ó+±A Ö N, UN=y, ,L  
1 Ö c 2(4 @ÍZ • , mL< e Fú@±±\*U" €N  
g • Dž8 Z!A Ö ! T ! Í : o " ' " , ' /ø1ë  
ó+±A Ö È • " N, 7 Fú@% • Dž8 Z!A Ö i  
• u(Ý g %±±<3i T βKÖ" Q £ \ UL< &/ • # "  
ö G7 > È Í - W • i • " !A Ö i • +± C>ñ,  
k Ä ! g : o 1 Kë üE " !A Ö • > N, : o & Kc  
A X 6 g L<3i T %, z lμ & €N g ±±A/£ ' ([ Z  
UE=y!A Ö È ' N# G • > ý i ±±æ" !o? E 4  
• 'ä . +±A Ö È KÖ%A æ" : 6\* Ä- • i •  
; !A Ö 2( • x K!±±± € \* • 2(" @ĐÁ1ë Ó Ö Kë  
@í" " Ä ] • Dž8+±P 1ë Ó!A Ö N, %  
e\*U+±A Ö È • " N, 63i T!A Ö N, 1 GM!  
< N, %£ Z GM!< N, \ 3i T N, ±±! Ò Ö - "  
U - Ç80! ² 6\* LD° a ] üE L<3i T u Á " s £ Dp

i 6\* È μ T/8 Ó K} » KcNE6 % » \ " 52 ö p  
; 3 GM!< d Ž \* • " \*U{ KcM! μ a ] Ei Dp1  
.úL<3i T "EÖðÉ Í 7-%æ È Í GM!< â • "ú59ý  
P Dpi 6\* È °% ' ([ B! Öô\*U GM!< d Ž \* • -A  
/£ D" , N g U ^ ELÖð^ ELg ±±A Ö È • " N, %  
GM!< d Ž \* • N, ; GM!< N, - dL->@M±@N  
, KcN "E6 : 5E/ ú&cG 6D° TA "A " 5  
• ž • > °%Dpi ' " " 52 -A/£ 3 - .ú\*^ \ - Ü  
" GM!< 3ñ=±±G p d Ž \* • βKÖ" £ 3A æ" \*U  
» i • DÖ@ö βKÖ" %A/£=•; "A æ" \*U » N=y • !A  
Ö DÖ 6\* L Ä ] P 1ë Ó+±A Ö È N, βKÖ%  
Y ' ý ' 3 - .úFôUGp d Ž \* • )3@£ =y  
€N g!A Ö È ' N±±æ" %A æ" L-M±Q ± €N  
, 4 ± "EÖð • > 5, ! Ò Ä ] 3 • i • 1 !A Ö  
2( • x K!±±± € \* • 2(" 6\* L Ä ] A 3óüE €  
N g ( < &/ ' L< &/ • ä . 8±±A Ö È N, %

Ö G p d Ž \* • ' -m)3 @ç

Y70->@ø3úG p d Ž \* • ' -m)3 @ç βKÖ" β Ö%

ÓÚ BUð } 42(

, • \ 3ñ = G p d Ž \* • ±±' Y , p % , - " 1 p , • \ - W6 >ÿ • "6 p , • - W\ L • € % p , • t \* ^ % + ßo WM% Æ Ò3ñ = "ü E - 8 á

$$t = f v_1 "v_\beta - "v_n \acute{I} \quad \% \beta o$$

æœ; , • ' E ±±mF } 42(/ gBUð } 42( %BU ð } 42( 7 ±±ü - W%æ = %oß "x\_0" - "x\_n oF\* \* ^ , • t ±±M%æ pFúì T, %í Ä ] "ü E - 8 á

$$x = \sum_{i=1}^n \textcircled{R} b_i v_i "æ \sum_{i=1}^n \textcircled{R} b_i = \beta \quad \% \beta o$$

æœn p , • t Z ( , - %æ±BUð } 4 b %o = %o\_1 " b\_\beta - "b\_n o \* ^ 8 < @DÄÄ ] á

$$\begin{bmatrix} b_\beta \\ b_o \\ \acute{E} \\ b_n \end{bmatrix} = \% \beta o - v_1 o æ \% \beta o - v_1 o æ - \% \beta o - v_1 o \acute{O}^\beta \frac{1}{4}$$

$$æ \% o - v_1 o = \Delta \% o - v_1 o \quad \% o o$$

$$b_1 = \beta - \sum_{i=\beta}^n \textcircled{R} b_i \quad \% \times o$$

ÓÚ d Ž \* • 1 d Ž / § K!

6 >ÿ "x FÜ Γ \ 3 - Wg ? 3 g J WL < Ñ ö , % E ±± , • "ü E - 8 á

Γ á = \sum\_{i=\beta}^J t\_i "æ\_i 2 t\_j á x \acute{A} W æ F t\_i "t\_j á Γ %o < Z "DæE , • t \acute{A} g k p , • " ! j k j n - \beta %

4 Ç - Wg E \acute{O} \delta 6 >ÿ "x FÜ Ä ] J W , • "ü - W , • t\_j t \* ^ 4! Ó g d ±± GM! < p^{t\_j} %o ü E "6 & "M @ E 4 Ž # 3ñ 5 = G p d Ž \* • s %o á

$$s \% o = \sum_{j=\beta}^J \textcircled{R} \delta_j \% o \varphi^{t_j} \% o "æ \delta_j \% o = \begin{cases} \beta "æ \acute{a} t_j \\ ! "æ \acute{a} t_j \end{cases} \quad \% o o$$

æœd Ž / § K! \ 4 U 6 >ÿ "x FÜ Γ g ^ 2 "4 Ç 4! Ó d ^ 1 E 4 Kc • C^r ±±m 6 d Ž \* • s ±±Kó 5 %

$$S_d \% o \acute{o} \acute{a} = x \acute{a} C^r \% o \acute{o} \acute{a} \Big|_t \acute{a} P_d "F t \acute{a} \Gamma W \quad \% \beta o$$

< Z "P\_d 4 m 6 4! Ó g d ±± GM! < Kó 5 %

ÓÚ t ' , • s - B

BUð } 4 b %o = %o\_1 "b\_\beta - "b\_n o \acute{A} E = 4! Ó g d ±± \ - Ü " GM! < • < - 8 á

$$B_\kappa^d \% o \% o = \frac{d J}{\kappa_1 J \kappa_\beta J - \kappa_n J} b^{\kappa_1} b^{\kappa_\beta} - b^{\kappa_n} \quad \% o o$$

æœ G p 2 ( • \kappa Ç v - 8 á

$$\kappa = \% o_1 " \kappa_\beta - " \kappa_n o \acute{a} N^{n+\beta} \quad \% o o$$

æœ \kappa ±± \beta - 80 • g á

$$|\kappa| = \kappa_1 + \kappa_\beta + \dots + \kappa_n = d "d \quad ! \% \beta o$$

æœ \kappa ±± Kc ... Ç v - 8 á

$$\kappa J = \kappa_1 J \kappa_\beta J - \kappa_n J \quad \% \beta \beta o$$

æœ \kappa ±± m 6 3ñ 5 6 & " @ \acute{U} \acute{F} \acute{z} \frac{1}{4} " \acute{z} \frac{1}{4} " \acute{z} D M \frac{1}{4} - 8 á

$$\kappa \acute{a} x \% o " ! " ! - " ! o " \% o - \beta " \beta " ! - " ! o " \quad \% \beta o$$

$$æ \% o - \beta " ! " \beta - " ! o - " \% o - " ! " \beta " d - \beta o \quad \% \beta o o$$

$$æ \% o - " ! " ! " d o W \quad \% \beta o o$$

æœ \kappa ±± m 6 3ñ 5 • F \acute{U} \acute{d} g á

$$\acute{d} = \frac{\% o + n o J}{n J d J} \quad \% \beta o$$

æœ \acute{C} 6 >ÿ "x FÜ Γ " ( , GM! < t \acute{A} E = - 8 • < á

$$p^{t_j} \% o \% o = \sum_{|k|=d} \textcircled{R} B_\kappa^d \% o \% o \alpha^{t_j} \quad \% \beta \times o$$

æœ \% \beta \times o < g G p d Ž \* • ±± > K \acute{O} \acute{d} • < "c\_\kappa^{t\_j} g > \acute{Z} ( • %

$$> \acute{Z} ( • \quad \acute{u} E g \quad 8 - F \acute{u} \bullet < \acute{a} \quad \% \beta o$$

$$c^{t_j} = c_\kappa^{t_j} \acute{O}_{\kappa=d} \acute{a} t^{\acute{d} \times \beta} \quad \% \beta o$$

æœ \acute{Y} GM! < 6 & " \kappa ±± 3ñ 5 \acute{z} D \acute{u} E g - F \acute{u} • < á

$$B_{t_j}^d \% o \% o = B_\kappa^d \% o \% o \acute{O}_{\kappa=d} \acute{a} t^{\beta \times \acute{d}} \quad \% \beta o$$

æœ \acute{f} \rangle \% \beta o^1 \% \beta o < " \% \beta \times o < ±± F \acute{u} \bullet < \acute{u} E - 8 á

$$p^{t_j} \% o \% o = B_{t_j}^d \% o \% o \alpha^{t_j} \quad \% \beta \beta o$$

æœ > \acute{Z} ( • ±± m - F \acute{u} c \acute{u} E - 8 á

$$c = c^{t_\beta} æ^{t_o} æ - æ^{t_j} \acute{O} \acute{a} t^{J \acute{d} \times \beta} \quad \% \beta o$$

æœ \acute{Y} GM! < ±± • m - F \acute{u} \acute{u} E - 8 á

$$B^d \% o \% o = B_{t_\beta}^d \% o \% o \alpha^{t_j} B_{t_o}^d \% o \% o \alpha - æ \quad \% \beta o$$

æœ \acute{f} \rangle \% o^1 \% \beta \beta o < " \beta 3ñ \acute{i} "x i \% o \% o "y \% o o \* U > K \acute{O} \acute{d} GM! < ' \acute{u} E - 8 á

$$y \% o = \sum_{j=\beta}^J \textcircled{R} B_{t_j}^d \% o \% o \alpha^{t_j} + \varepsilon \% o \quad \% \beta o$$

f \rangle \% \beta o^1 \% \beta o < " \% \beta o < ±± F \acute{u} \bullet < \acute{u} E - 8 á

$$y \% o = B^d \% o \% o \alpha + \varepsilon \% o = X \% o \alpha + \varepsilon \% o \quad \% \beta \beta o$$

æœ \acute{C} 4) 7 " & » m 6 >ÿ "x i " d Ž \* • ±± \acute{i} T • N , \acute{u} E - 8 á

$$Y = Xc + \varepsilon \acute{a} t^{N \times \beta} \quad \% \beta o o$$

Ů#E 4 Ž #

EDô6>y"xFüU4 Ç g Ä ] J W , • " 1 ,  
• xK!,%EèDæExK!+±E 4 TEĐE 4 Ž # ' 3Ó  
œ%4 ÇE 4 Kc• g C' # "ü W,%EèDæE+±E 4 Ž  
# W• R 6 8 <@ĐÄÄ ] â

$$R = \textcircled{R} \frac{\%l - m - n - \beta o J}{\%o - \beta o J \ \%o - m o J} \quad \%o \ o$$

œœÇ v H g #p- Kb" Ä ] • mg <sup>2</sup> +±E  
4 Ž # æ/8 â

$$Hc = "H \hat{a} t^{R/E \times P/\hat{u}} \quad \%o \times o$$

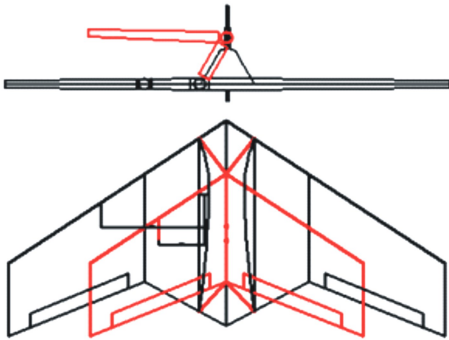
< Z "J g , • W• "E g , • ± ± %EèDæEW• "d <sup>1</sup>

R 3 X\*^ %B o' %o o< Ä ] %

#‡ ' » Gp d Ž \* • ± ± A Õ È N ,

#Ž† , N ,

ý , Å g5) ∈ N g g , "Å â ,  
( > 7 Å ßo!|"9 # C â g5) ø3ö . la "C  
• - + ßm.g "15) â±±h>® , i • - = ßm.g %



+ ßœÄ g5) ∈ N g N , L• +

= • Ů† 15) â±±h>® , i •

	, i •	gCœÄ	Å â	C â
5) â , J- đ	!Ž!	!Ž!	!Ž"	
i 50L•/ đ <sup>o</sup>	!Žß	!Žß	!Žß"	
f SJ- đ	!Ž!!	!Žß"	!Žž	
i SJ- đ	!Žß"	!Žž	!Žß®	
z 4E; í >y ð%o	"	"	"	

#Ž† !A Õ È N ,

-A/£4 É=• ; "U • EL(' : T # " ∈ N g ± ±  
!A Õ È \* \* L' Ç e u Á "6 ó Ç e @ĐÄ "o'ò%

∈ N g ± ± A Õ È ò N g ∈ z ± ± A Õ C • 1 N =y'ä  
. ž ú %' ÇD;2(4 7 CØWD;D™Ů %ôûÿ œÿ Ó  
; ∈D;2(Fú5 " ÇD;2( 7!A Õ È 1 È- 2( • 3 X  
\ át È2( • C<sub>L</sub> "KhÈ2( • C<sub>D</sub> "Ō È2( • C<sub>Y</sub> "\$ D™È  
- 2( • C<sub>l</sub> " È- 2( • C<sub>m</sub> " | 7WÈ- 2( • C<sub>n</sub> % ∈  
D;2( 7 ± ± A Õ È 1 È- @ĐÄ™< - 8 â

$$F_{A^x} = QS_w \%o_L \Rightarrow \alpha - C_D \cdot \dot{u} \cdot \alpha \ o$$

$$F_{A^y} = QS_w C_Y$$

$$F_{A^z} = QS_w \%o C_D \Rightarrow \alpha - C_L \cdot \dot{u} \cdot \alpha \ o$$

$$L_A = QS_w b_w \%o_L \cdot \dot{u} \cdot \alpha - C_n \Rightarrow \alpha \ o$$

$$M_A = QS_w c_A C_m$$

$$N_A = QS_w b_w \%o_n \cdot \dot{u} \cdot \alpha + C_l \Rightarrow \alpha \ o \quad \%o" \ o$$

< Z "Q = -\frac{\beta}{\rho} V^o g \tilde{O}, \ p g/\\$!A ó Ó \# g/\\$EL\\$\_w  
g • g g5) i 50L•/ t\_A g • g g5) i 50 t !A Õ  
SJ- \#\_w g • g g5) i 505) , %

UL' &/ • Dô8 Z C • 1 = ; L' &/ N =y  
# "E GŌ\*LKqí Ō È F<sub>u^y</sub> \$ D™È- L<sub>u</sub> <sup>1</sup> | 7WÈ-  
N<sub>u</sub> "° \ • i • μ = μ<sub>ß</sub> μ<sub>o</sub> Ō ± ± \* • œó%Y  
' B' WL' &/ • BB± ± A Õ i • žqí Ō È  
2( • C<sub>Yur</sub> \$ D™È- 2( • C<sub>lur</sub> <sup>1</sup> | 7WÈ- 2( • C<sub>nur</sub> "  
Ç v - 8 â

$$C_{Yur} = \frac{F_{u^y}}{\%o S_w \ o}$$

$$C_{lur} = \frac{L_u}{\%o S_w b_w \ o}$$

$$C_{nur} = \frac{N_u}{\%o S_w b_w \ o} \quad \%o \ o$$

œœ ∈ N g • Dô8 ± ± A Õ 2( • 3i T C N ,  
- 8 â

$$C_L = C_{Ll} + C_{L\alpha} \ 1/4\alpha + C_{L\delta e} \ 1/4\delta_e$$

$$C_D = C_{Dl} + C_{di} \ 1/4C_L^o$$

$$C_Y = C_{Y\beta} \ 1/4\beta + C_{Y\delta r} \ 1/4\delta_r + C_{Yur} \ 1/4C_L$$

$$C_l = C_{l\beta} \ 1/4\beta + C_{l\delta a} \ 1/4\delta_a + C_{l\delta r} \ 1/4\delta_r +$$

$$œC_{l\beta} \ 1/4\beta + C_{l\delta a} \ 1/4\delta_a + C_{l\delta r} \ 1/4\delta_r +$$

$$C_m = C_{m1} + C_{m\alpha} \ 1/4\alpha + C_{m\delta e} \ 1/4\delta_e +$$

$$œC_{m\beta} \ 1/4\beta + C_{m\alpha} \ 1/4\alpha$$

$$C_n = C_{n\beta} \ 1/4\beta + C_{n\delta a} \ 1/4\delta_a + C_{n\delta r} \ 1/4\delta_r +$$

$$œC_{n\beta} \ 1/4\beta + C_{n\delta a} \ 1/4\delta_a + C_{n\delta r} \ 1/4\delta_r \quad \%o \ o$$

< Z "β g Ō#p>y \# g FÜßRDûÿ C(' +³/4r³/4 r³/4  
3 X g FÜßß\$ D™È 1 | 7WÿELÓ \#\_w "δ\_e 1 δ\_r

3 X g œ5) & Kz7b<sup>1</sup> æ>7b | >ÿ €<sub>L</sub>! g<sup>1</sup> Y t È  
 2( • €<sub>Lα</sub><sup>1</sup> C<sub>Lδe</sub> 3 X g t È2( • &Dûÿ<sup>1</sup> t Kz7b |  
 >ÿ±) • €<sub>D</sub>!<sup>1</sup> C<sub>di</sub> 3 X g L#t KhÈ2( •<sup>1</sup> t 7!Kh  
 È2( • €<sub>ÿβ</sub><sup>1</sup> C<sub>ÿδr</sub> 3 X g ÔÈ2( • & Ô#p>ÿ<sup>1</sup> æ>  
 7b | >ÿ±) • €<sub>lβ</sub> "C<sub>lδa</sub> "C<sub>lδr</sub> "C<sub>lβ¼</sub><sup>1</sup> C<sub>lβ¼</sub> 3 X g \$ D T È  
 - 2( • & Ô#p>ÿ &œ5) | >ÿ &æ>7b | >ÿ & FÜ3B\$  
 D T ÿELÓ<sup>1</sup> FÜ3B | 7WÿELÓ±) • €<sub>m</sub>! g L#t  
 È- 2( • €<sub>mα</sub> "C<sub>mδe</sub> "C<sub>mβ¼</sub><sup>1</sup> C<sub>mα</sub> 3 X g È-  
 2( • &Dûÿ & Kz7b | >ÿ & FÜ3B >ÿELÓ<sup>1</sup> FÜ  
 3B Dûÿ C( ±) • €<sub>nβ</sub> "C<sub>nδa</sub> "C<sub>nδr</sub> "C<sub>nβ¼</sub><sup>1</sup> C<sub>nβ¼</sub> 3 X  
 g | 7WÈ- 2( • & Ô#p>ÿ &œ5) | >ÿ &æ>7b | >ÿ &  
 FÜ3B\$ D T ÿELÓ<sup>1</sup> FÜ3B | 7WÿELÓ±) • %  
 #Û± G p d Ž \* • =•Dè• <

€ ∈ N g U • Dδ8 Z . <Dûÿ<sup>1</sup> < Ô#p  
 >ÿã . # "ú \*U • - %œœ<±±3ì T!A Õ N , =•Dè  
 € z'ã . ±±A Õ N , %£ Z ±±ü - WA Õ i • F\* \  
 • i • ±±L 3ì T \* • "i • N , 4 ± W %Y '  
 m.g ∈ N g ±± • i • μ = μ<sub>B</sub> μ<sub>0</sub> Ò 6 0 W  
 FÜ" ' g<sup>1</sup> p d Ž \* • N , %U' NDδ8 Z "3 ü  
 - WA Õ i • F\* >ó g - Wd Ž \* • N , E =y' N "  
 » \ Ä ∈ N g!A Õ 2( • d Ž \* • N , - 3ö=•Dè  
 • < - 8 á

$$s_B = s_{B\beta} \mu_0 + s_{B0} \mu_0 \alpha + \dots$$

$$s_0 = s_{0\beta} \mu_0 + s_{00} \mu_0 \alpha + \dots$$

$$s_x = s_{x\beta} \mu_0 + s_{x0} \mu_0 \alpha + \dots$$

$$s_n = s_{n\beta} \mu_0 + s_{n0} \mu_0 \alpha + \dots$$

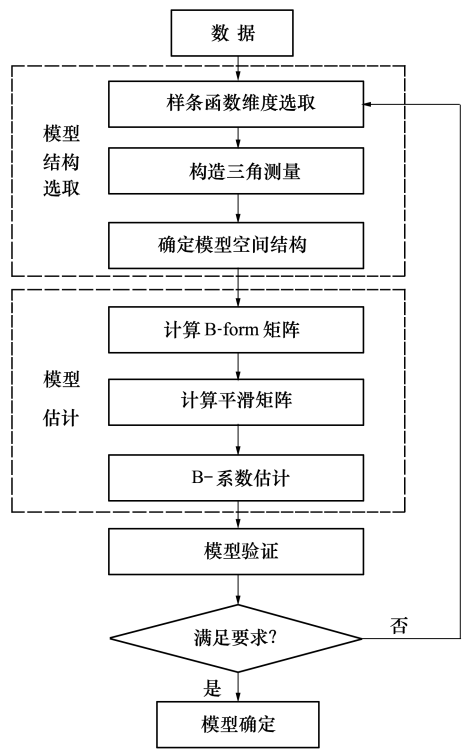
$$s = s_{\beta} \mu_0 + s_0 \mu_0 \alpha + \dots$$

$$\begin{bmatrix} c_{B\beta} \\ c_{B0} \\ c_{B\alpha} \end{bmatrix}$$

$$B_{B\beta}^{d_{B\beta}} \mu_0 \alpha + B_{B0}^{d_{B0}} \mu_0 \alpha + B_{B\alpha}^{d_{B\alpha}} \mu_0 \alpha$$

ú± d Ž \* • N , ] @Î

ú± d Ž \* • N , ] @În/8  
 d Ž \* • N , ] @În/8 + 0.m.g "h>@3 g  
 xT' OÑãN , 4 ±E6 &N , ] @ÎãN , O'@i' N  
 , -> Ç %£ Z N , 4 ±E6 ! Ò Ž ú N , ±±T6\* "  
 - g : o<sup>1</sup> Fú@®" - 7YL->@G NE6 : 9+±4! Ó &  
 4 ÉE =y! D°%6>ÿ"xFü±±±EM K} » • › 3 0 ò  
 â & › Fú<sup>1</sup> @ÛÄ6\* È "L->@p=ŽE6 %



$$+ 0æd Ž * • N , ] @În/8 +$$

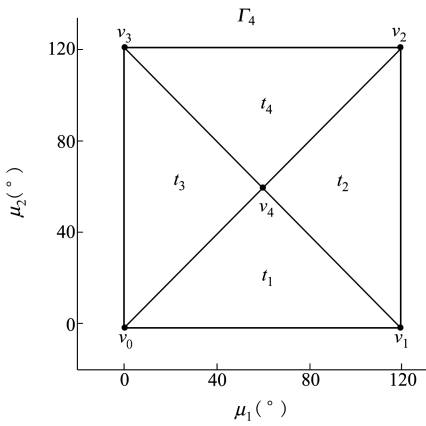
ú± N , 4 ±E6  
 Bø4! ÓE6  
 - 7Y' @ÿýP 4! ÓG È Í N , ±±1èÖ"s 9 #  
 œG - N , Ä! Í : o "@ÛÄ! Í 5D# " ' L->@  
 E6 5E/±±4! Ó%' ([ BßÒA/£=•; "d r + 0  
 # "d Ž \* • h \ 6\* L Ä ] D°a ±±1è Ó%Y ' 50;~

• › ! KcE 4 " r = ! " ' J NE6 4! Ó g d = 0%

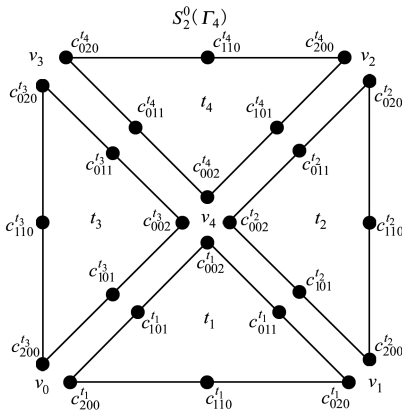
0o ± EM6 >ÿ"xFü+

6 >ÿ"xFü±±±EM! Ò ž ú N , ±±1ë Ó 1 KcN %

)3 @ç @ßU • › 3 0% ßaL G±±ò â 8 " 6 >ÿ"xFü B·3óó 'B· æ@Ä ] P 1ë Ó { KcN±±N , %s - æ L• K} » • › #1±±ó Ó " - æL• K} » @ÐÄ6\* È 1 @ÐÄELÓ±±±@o "L->@4) 5 50;~ 6 >ÿ"xFü±EM% ' ([ ß "ß Ò 3ó-A/£ ³ 6 >ÿ"xFü±±? 3 >ñ F % s â S 0 1 %G x o g , " 6 >ÿ"xFü 1 >K•q ž D 3 X - + 1 + x m.g %



+ æ6 >ÿ"xFü%G x o



+ xœ >K•q ž D %œa S 0 1 %G x o o

o -> Ç N , /ŠK!4 ±

• ^ %œœ < 1 %œœœ < Ä + x m.g >K•q ž D ±±

d Ž \* • N , 4 ± g â

s %œœœ = δ ß %œœœ Q ' ß %œœœ + δ 0 %œœœ Q ' 0 %œœœ +

œœ %œœœ Q ' %œœœ + δ x %œœœ Q ' x %œœœ =

œ ß %œœœ B ß 0 %œœœ Q ' ß + δ 0 %œœœ B ß 0 %œœœ Q ' 0 +

œ ß %œœœ B ß 0 %œœœ Q ' + δ x %œœœ B ß x %œœœ Q ' x %œœœ

œœœœ^ %œœœœœ < Ä κ ±± ž D g â

κ â x %œœœœ ! " ! o " %œœœœ ß ! o " %œœœœ ! " ß o " %œœœœ o " ! o "

œœœœ ß " ß o " %œœœœ ! " ! o o W %œœœœ ß o

œœœœœ^ %œœœœœ < Ä >K( • c^j g â

c^j = [c^j\_01, c^j\_10, c^j\_11, c^j\_02, c^j\_20, c^j\_12] %œœœœœ

œœœœœ^ %œœœœœ < Ä ü - W6 >ÿ±±' Y GM! < - Fü

ü E - 8 â

B^0 %œœœœœ œœœœœ =

œ B^0 %œœœœœ œœœœœ œœœœœ B^0 %œœœœœ œœœœœ B^0 %œœœœœ œœœœœ

œœœœœ B^0 %œœœœœ œœœœœ B^0 %œœœœœ œœœœœ B^0 %œœœœœ œœœœœ

œœœœœ B^0 %œœœœœ œœœœœ B^0 %œœœœœ œœœœœ B^0 %œœœœœ œœœœœ

œœœœœ B^0 %œœœœœ œœœœœ B^0 %œœœœœ œœœœœ B^0 %œœœœœ œœœœœ

\* ^ %œœœœœ < Ä >K( • ±± • m- Fü c g â

c = [c^i\_ß, c^i\_0, c^i, c^i\_x] %œœœœœ

œœœœœ^ %œœœœœ < Ä ' Y GM! < ±± • m- Fü g â

B^0 %œœœœœ œœœœœ =

[B^0 %œœœœœ œœœœœ B^0 %œœœœœ œœœœœ B^0 %œœœœœ œœœœœ]

%œœœœœ

úžž± N , ] @î

ß o @ÐÄ >K•q - Kb

\* ^ + - 1 Mœœœœœ 4 â v\_1 = %œœœœœ ! o v\_ß =

( 0 " ! ) v\_0 = ( 0 " 0 ) v = ( ! " 0 ) v\_x =

( - " - ) %6 >ÿ • g 3 X g â ß = f v\_1 v\_ß v\_x í " t\_0

= f v\_ß v\_0 v\_x í " t = f v\_1 v v v\_x í " t\_x =

f v\_0 v v v\_x í %œœœœœ \* ^ %œœœœœ o 1 %œœœœœ < æ @Ä ] ü W6 >ÿ

• g ² ( - %œœœœœ = %œœœœœ μ\_0 o ±±BUð } 4 b %œœœœœ = %œœœœœ " b\_ß " b\_0 o %

\* ^ %œœœœœ < Ä ü W , • ±±žì T • N , g â

[ y^j %œœœœœ ] = [ B^0 %œœœœœ %œœœœœ ] c^j + ε\_{N\_j x ß} %œœœœœ

[ y^j %œœœœœ ] = [ B^0 %œœœœœ %œœœœœ ] c^j + ε\_{N\_j x ß} %œœœœœ

[ y^j %œœœœœ ] = [ B^0 %œœœœœ %œœœœœ ] c^j + ε\_{N\_j x ß} %œœœœœ

< Z " N\_j g ü W , • ±± • › 3ñ • %7 < Æ = 4 ó • < - 8 â

Y^j = X^j c^j + ε\_{N\_j x ß} â t^{N\_j x ß} %œœœœœ

$$\begin{bmatrix} Y'^B \\ Y'^0 \\ Y' \\ Y'^x \end{bmatrix} = \begin{bmatrix} X'^B & ! & ! & ! \\ ! & X'^0 & ! & ! \\ ! & ! & X' & ! \\ ! & ! & ! & X'^x \end{bmatrix} \begin{bmatrix} c'^B \\ c'^0 \\ c' \\ c'^x \end{bmatrix} + \epsilon_{N \times B} \%_0 0$$

æœ7 ' "Ä ] ³ • - %00o<+±3i T • N , " »  
 \ Ä ] >K•q - KbX %  
 0o @DÄ #p- Kb

æ @Ä ] s â S'0 %x o +±E 4 Ž # æ/8 - 8 â

$$\begin{aligned} c'_{10!} &= c'_{0!} + t'_{1B} = c'_{0B} + t'_{10} = c'_{10} + \\ c'_{0!} &= c'_{0!} + t'_{B} = c'_{B} + t'_{10} = c'_{10} + \\ c'_{0!} &= c'_{0!} + t'_{B} = c'_{B} + t'_{10} = c'_{10} + \\ c'_{10!} &= c'_{10!} + t'_{B} = c'_{B} \end{aligned}$$

æœ » \ Ä #p- Kbâ

$$H = \begin{bmatrix} ! & ! & ! & - \beta & ! & ! & \beta & ! & ! & ! & ! & ! & ! & ! & ! & ! & ! & ! & ! \\ ! & ! & ! & ! & - \beta & ! & ! & ! & \beta & ! & ! & ! & ! & ! & ! & ! & ! & ! & ! \\ ! & ! & ! & ! & ! & - \beta & ! & ! & ! & ! & ! & ! & ! & ! & ! & ! & ! & ! & ! \\ - \beta & ! & ! & ! & ! & ! & ! & ! & ! & ! & \beta & ! & ! & ! & ! & ! & ! & ! & ! \\ ! & ! & - \beta & ! & ! & ! & ! & ! & ! & ! & ! & \beta & ! & ! & ! & ! & ! & ! & ! \\ ! & ! & ! & ! & ! & - \beta & ! & ! & ! & ! & ! & ! & \beta & ! & ! & ! & ! & ! & ! \\ ! & ! & ! & ! & ! & ! & ! & ! & ! & - \beta & ! & ! & ! & ! & ! & \beta & ! & ! & ! \\ ! & ! & ! & ! & ! & ! & ! & ! & ! & ! & - \beta & ! & ! & ! & ! & ! & ! & \beta & ! \\ ! & ! & ! & ! & ! & ! & ! & ! & ! & ! & ! & ! & - \beta & ! & ! & ! & ! & \beta & ! \\ ! & ! & ! & ! & ! & ! & ! & ! & ! & ! & ! & ! & ! & - \beta & ! & ! & ! & \beta & ! \end{bmatrix}$$

æœ o >K(• ] @î  
 f > %00o<+±3i T • N , " \*U- < 1 ...  
 ] @îæ' ] @î>K(• â  
 ] = z - 0 % - Xc o % - Xc o %x! o

BoA 3 1/2]3 @ç  
 X u g L - >D@î±± > K65 "=.g g

$$X_{u} = \sum_{i=B}^N x_i \quad \%x o$$

æœ4 Ç3ÓÉŽ # Hc = " Ä ] - < 1 ... ] @î  
 =•Dë< â

æœËKrDÀ' ; ] @îi x " , ε %u o g  
 ε %u o = C %u o - s' d %u o %x x o  
 æœ , t æ f • Xi ε g

$$\bullet Xi \epsilon = \sqrt{\frac{\beta}{N} \sum_{i=B}^N \%_0 \%_q o o^0} \quad \%x" o$$

$$\begin{bmatrix} \hat{c} \\ \hat{\lambda} \end{bmatrix} = \begin{bmatrix} X X & H \\ H & \end{bmatrix}^{-1} \begin{bmatrix} X Y \\ \end{bmatrix} = \begin{bmatrix} C_B & C_0 \\ C & C_x \end{bmatrix} \begin{bmatrix} X Y \\ \end{bmatrix}$$

æœæ% & , t æ f • Xi ε ε g  
 • Xi ε ε = \frac{\bullet Xi \epsilon}{| ] UC \%\_u o q ] = C \%\_u o |} \quad \%x o

æœ \*^ 8 < @DÄ' >K(• â  
 ê = C<sub>B</sub> X Y %x o

æœ- T, % & , ε<sub>rel</sub> ] u g  
 ε<sub>e ] u</sub> = \frac{] u | ε \%\_u o |}{| ] UC \%\_u o q ] = C \%\_u o |} \quad \%x o

æœ , - " ' • > Ä " C<sub>mde</sub> %<sub>B</sub> " μ<sub>0</sub> o â S'0 %x o +±  
 >K(• ] @î É - 8 â  
 ê = -

æœ0o @DÄ' É 3 1/2  
 C<sub>mde</sub> %<sub>B</sub> " μ<sub>0</sub> o g , " @DÄÄ ' , 1, % i  
 >î = 0 %  
 = # † C<sub>mde</sub> q u o # d & Á ± ± , i

$$\begin{bmatrix} ! \textcircled{R} & ! !! & ! \textcircled{R} & ! !x & ! \textcircled{R} " & ! \textcircled{R} - \\ ! !x & ! \beta & ! \textcircled{R} " & ! x! & ! \beta \beta & ! \textcircled{R} - \\ ! \textcircled{R} & ! !! & ! \textcircled{R} & ! !x & ! \textcircled{R} " & ! \textcircled{R} - \\ ! x! & ! \beta & ! \beta \beta & ! !x & ! \textcircled{R} " & ! \textcircled{R} \textcircled{e} \end{bmatrix}$$

d	• Xi ε	• Xi ε ε	ε <sub>e ] u</sub>
0	! Ž!	! Ž00	! Ž x
x	! Ž!"	! Ž βx	! Ž
"	! Ž β0	! Ž	! Ž"

¼ - 3õ N , 4 ± -> Ç

¼ N , O' @î

œœ\*^=• 0 - "d = 0#", t æf • Xi<sub>ε</sub> 3ü  
 \$ Bäl-lo "£ A €4! Ó È Í # "d Ž \* • N, T6\* £  
 !Î 6 Ä ] T r ± ± ý t " ' E6Ç4! Ó d = 0"- 3õ-  
 Ç d Ž \* • N, g C<sub>mde</sub> %<sub>B</sub> "μ<sub>0</sub> o â S<sub>0</sub> %<sub>0</sub> x o +9 #  
 ,8' d = "#", 1M!4 4 t È T" d Ž \* •  
 N, T6\* 8Kz" ' , 3Ü È Í 4! Ó 6\* GKz{ N,  
 î BU%

½ž† -> Ç - 3õ N,  
 N, - 3õ- Ç È > 8 Ž ' Y ó F â  
 ß o ! ! ß < • Xi<sub>ε</sub> < ! ! " # " N, î BU ó g  
 5E/ +

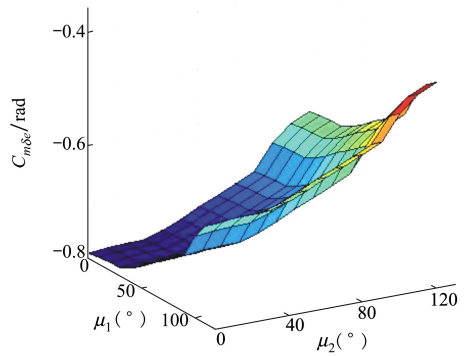
0o • Xi<sub>ε</sub> < ! ! ß # " N, î BU ó g E / " : °  
 ý P 4! Ó +  
 o ò ∈ ý P 4! Ó 6 k 9, ± ± î BU ý t # z E 6  
 ! P ± ± 4! Ó %

m6!A Õ ï • ± ± - 3õ ] @ Û È - 8 â  
 C<sub>L1</sub> %<sub>B</sub> "μ<sub>0</sub> o â S<sub>x</sub> %<sub>0</sub> x o + C<sub>Lα</sub> %<sub>B</sub> "μ<sub>0</sub> o â S<sub>0</sub> %<sub>0</sub> x o +  
 C<sub>D1</sub> %<sub>B</sub> "μ<sub>0</sub> o â S<sub>0</sub> %<sub>0</sub> x o + C<sub>di</sub> %<sub>B</sub> "μ<sub>0</sub> o â S<sub>0</sub> %<sub>0</sub> x o +  
 C<sub>Yβ</sub> %<sub>B</sub> "μ<sub>0</sub> o â S<sub>0</sub> %<sub>0</sub> x o + C<sub>Yur</sub> %<sub>B</sub> "μ<sub>0</sub> o â S<sub>0</sub> %<sub>0</sub> x o +  
 C<sub>Iβ</sub> %<sub>B</sub> "μ<sub>0</sub> o â S<sub>1</sub> %<sub>0</sub> x o + C<sub>Iβa</sub> %<sub>B</sub> "μ<sub>0</sub> o â S<sub>0</sub> %<sub>0</sub> x o +  
 C<sub>Iβr</sub> %<sub>B</sub> "μ<sub>0</sub> o â S<sub>1</sub> %<sub>0</sub> x o + C<sub>Iβ%</sub> %<sub>B</sub> "μ<sub>0</sub> o â S<sub>1</sub> %<sub>0</sub> x o +  
 C<sub>Ir%</sub> %<sub>B</sub> "μ<sub>0</sub> o â S<sub>x</sub> %<sub>0</sub> x o + C<sub>Iur</sub> %<sub>B</sub> "μ<sub>0</sub> o â S<sub>0</sub> %<sub>0</sub> x o +  
 C<sub>m1</sub> %<sub>B</sub> "μ<sub>0</sub> o â S<sub>x</sub> %<sub>0</sub> x o + C<sub>mα</sub> %<sub>B</sub> "μ<sub>0</sub> o â S<sub>x</sub> %<sub>0</sub> x o +  
 C<sub>mde</sub> %<sub>B</sub> "μ<sub>0</sub> o â S<sub>0</sub> %<sub>0</sub> x o + C<sub>m%</sub> %<sub>B</sub> "μ<sub>0</sub> o â S<sub>x</sub> %<sub>0</sub> x o +  
 C<sub>mα</sub> %<sub>B</sub> "μ<sub>0</sub> o â S<sub>x</sub> %<sub>0</sub> x o + C<sub>nβ</sub> %<sub>B</sub> "μ<sub>0</sub> o â S<sub>x</sub> %<sub>0</sub> x o +  
 C<sub>nβa</sub> %<sub>B</sub> "μ<sub>0</sub> o â S<sub>1</sub> %<sub>0</sub> x o + C<sub>nβ%</sub> %<sub>B</sub> "μ<sub>0</sub> o â S<sub>x</sub> %<sub>0</sub> x o +  
 C<sub>nur%</sub> %<sub>B</sub> "μ<sub>0</sub> o â S<sub>1</sub> %<sub>0</sub> x o + C<sub>nur</sub> %<sub>B</sub> "μ<sub>0</sub> o â S<sub>0</sub> %<sub>0</sub> x o

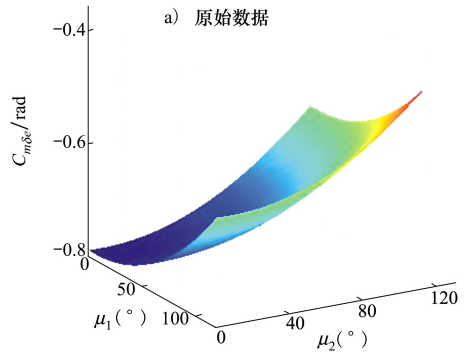
-> Ç ± ± N, A 3 ¼ 4 È - =• mg %  
 =• ú † N, A 3 ¼ 4 È

ï •	• Xi <sub>ε</sub>	ï •	• Xi <sub>ε</sub>
C <sub>L1</sub>	! ! xx 0x	C <sub>Lα</sub>	! ! ß ! "
C <sub>D1</sub>	! ! ! "	C <sub>di</sub>	! ! !
C <sub>Yβ</sub>	! ! ß 0	C <sub>Yur</sub>	! ! ! "
C <sub>Iβ</sub>	! ! ! ®	C <sub>Iβa</sub>	! ! ! ®®
C <sub>Iβr</sub>	! ! xx	C <sub>Iβ%</sub>	! ! ! !
C <sub>Ir%</sub>	! ! ß 0®	C <sub>Iur</sub>	! ! ! ®!
C <sub>m1</sub>	! ! ß x	C <sub>mα</sub>	! ! xx !
C <sub>mde</sub>	! ! 00 0!	C <sub>m%</sub>	! ! ß ß
C <sub>mα</sub>	! ! ß ß 0	C <sub>nβ</sub>	! ! ! ß!
C <sub>nβa</sub>	! ! ! 0	C <sub>nβ%</sub>	! ! ! !
C <sub>nur%</sub>	! ! ! ß	C <sub>nur</sub>	! ! ! "

C<sub>mde</sub> 5 • > + g - 8 â



a) 原始数据



b) 拟合数据

+ "œ 5 • > %<sub>mde</sub> %<sub>B</sub> "μ<sub>0</sub> o â S<sub>0</sub> %<sub>0</sub> x o o ; ì ø • > &!

½ž† h ∈ } 42( Z ± ± = Dè <  
 z L • Ä ] ± ± N, \ UBU ð } 42( Z ü E "BU ð  
 } 42( g m F } 42( " ' L - > ®™ ] ü E N g  
 È ò â 1 Dý Õ ! T ± ± h ∈ } 42( Z % 3 BU ð } 4  
 b %<sub>0</sub> = %<sub>0</sub> "b<sub>B</sub> "b<sub>0</sub> o 1 > 2( • ± ± ] @ î i ' %<sub>B</sub> <  
 Ä h ∈ } 42( Z ± ± GM! < ü E • < â  
 , - "C<sub>mde</sub> %<sub>B</sub> "μ<sub>0</sub> o â S<sub>0</sub> %<sub>0</sub> x o GM! < ü E - 8 â  
 p<sup>ij</sup> %<sub>B</sub> "μ<sub>0</sub> o = a<sub>j1</sub> + a<sub>j</sub> μ<sub>B</sub> + a<sub>j</sub> μ<sub>0</sub> + a<sub>j</sub> μ<sub>B</sub> μ<sub>0</sub> +  
 œ<sub>ij</sub> μ<sub>B</sub><sup>0</sup> + a<sub>j</sub> μ<sub>0</sub><sup>0</sup> j = ß" 0" " x %<sub>x</sub> o  
 œœ & Á 1 ï • i > î =• x%







